

## Playing Back a BD/DVD Created on this Unit

BD/DVDs created using the backup function on this unit can be played back on TV using an optional DVD writer (DVDs only) with playback function (CU-VD50U) or a normal BD/DVD player. DVDs can also be played back on this unit by connecting the optional DVD writer with playback function.

Playback Device	DVD (DVD-Video format)	DVD (AVCHD format)	Blu-ray Disc
DVD writer connected to this unit	✓	✓	-
External Blu-ray drive connected to this unit	✓	✓	✓
DVD player/ DVD recorder	✓	✓ *	-
Blu-ray player/ Blu-ray recorder	✓	✓ *	✓
DVD writer with playback function (CU-VD50U)	✓	✓	-

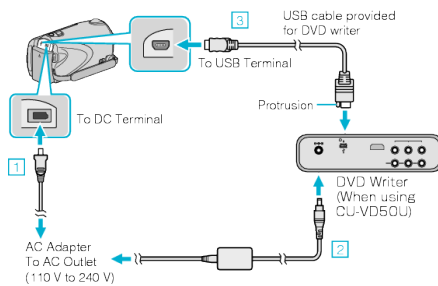
\*Only for AVCHD compatible devices

### CAUTION:

- DVDs that are created in AVCHD format cannot be played back on DVD players with standard quality. You may not be able to remove the disc from the player.

## Playing Back with a DVD Writer

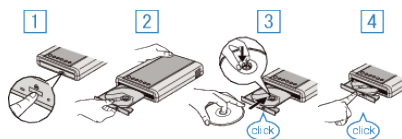
1 Close the LCD monitor and connect.



- 1 Connect the AC adapter to this unit.
- 2 Connect the AC adapter of the DVD writer.
- 3 Connect the USB cable provided with the DVD writer.

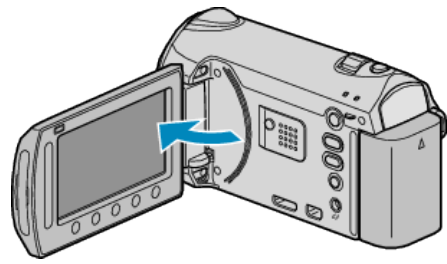
- To view on a TV, connect this unit to the TV.

2 Load a DVD created on this unit into the DVD writer.



- 1 Press the power button to turn on the power.
- 2 Press the eject button to open the disc tray.
- 3 Pull out the tray completely and load a new disc properly.
- 4 Push the disc tray in until it clicks into place.

3 Open the LCD monitor.



- This unit turns on and the BACK-UP menu appears.
- While the USB cable is connected, the BACK-UP menu is displayed.

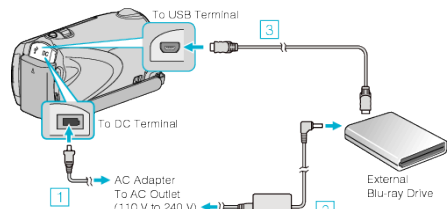
4 Select "PLAYBACK" and touch  $\odot$ .



- Playback starts.

## Playing Back with an External Blu-ray Drive

1 Close the LCD monitor and connect.



- 1 Connect the AC adapter to this unit.
- 2 Connect the AC adapter of the external Blu-ray drive.
- 3 Connect the USB cable of the external Blu-ray drive to this unit.

- Refer also to the instruction manual of the external Blu-ray drive.
- To view on a TV, connect this unit to the TV.

2 Load a Blu-ray disc created on this unit into the external Blu-ray drive.

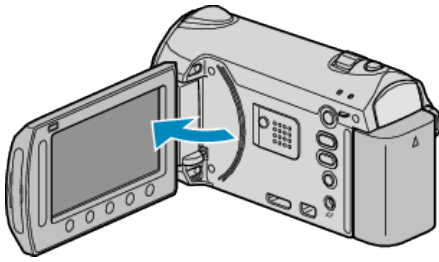
- Press the power button on the external Blu-ray drive to turn on the power.



- 1 Press the eject button to open the disc tray.
- 2 Pull out the tray completely and load a new disc properly.
- 3 Push the disc tray in until it clicks into place.

## Playback

3 Open the LCD monitor.



- This unit turns on and the BACK-UP menu appears.
- While the USB cable is connected, the BACK-UP menu is displayed.

4 Select "PLAYBACK" and touch **OK**.



- Playback starts.

### CAUTION:

- Be sure to turn off the power when connecting the devices. Otherwise, electric shocks or malfunctions may occur.

### Memo:

- Only DVDs and Blu-ray discs created on this unit can be played back.
- Chapters are not displayed on the menu.

### Digest Playback on a DVD Writer

You can view a few seconds of each video in the disc continuously by playing back the created disc in a player and selecting "DIGEST PLAYBACK" from the top menu. Use this to check the content of videos or to look for the desired scene.

- To return to normal playback, press the top menu button on the remote control of the player and select "TO NORMAL PLAYBACK".

