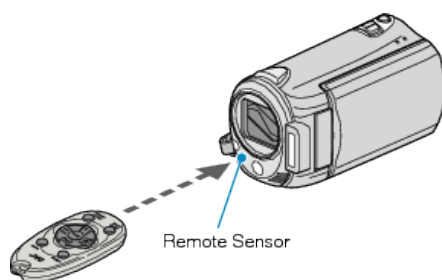


Using the Remote Control

You can operate this unit from a distance away using the supplied remote control.



Memo:

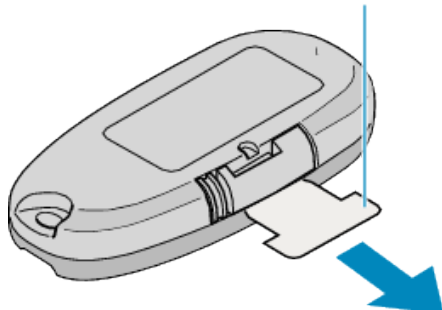
- Point the remote control toward the sensor directly and use it within 5 m from this unit.
- The transmitted beam may not be effective or may cause incorrect operation when the sensor is directly exposed to sunlight or powerful lighting.

Preparing the Remote Control



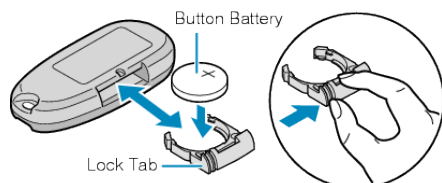
Using the Remote Control for the First Time

Pull out the insulation sheet



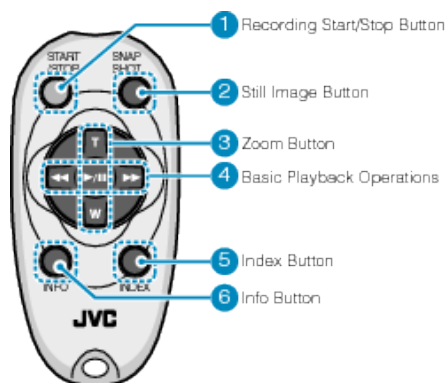
- A button battery (CR2025) is included inside the remote control at the time of purchase. Remove the insulation sheet before use.

Reinserting the Battery



- Pull out the battery holder by pressing the lock tab.
- Insert the button battery with the + side facing upward.

Operation Buttons on Remote Control Unit



1 Recording Start/Stop Button

- Starts/stops video recording.

2 Still Image Button

- Takes a still image.

3 Zoom Button

- T: Zooms in
- W: Zooms out

4 Basic Playback Operations

Operation Button	Description
Playback/Pause Button ▶ /	<ul style="list-style-type: none"> • Starts/pauses playback of videos or slide-shows.
Left Button ◀◀	<ul style="list-style-type: none"> • Moves the cursor to the left. • Performs reverse search during playback.
Right Button ▶▶	<ul style="list-style-type: none"> • Moves the cursor to the right. • Performs forward search during playback.
T Button T	<ul style="list-style-type: none"> • Zooms in. (during pause) • Turns up (+) the volume during video playback.
W Button W	<ul style="list-style-type: none"> • Zooms out. (during pause) • Turns down (-) the volume during video playback.

5 Index Button

- Stops playback and returns to thumbnail display.

6 Info Button

- Recording: Displays the remaining time (for video only) and battery power.
- Playback: Displays file information such as recording date.